

Windows XP Laptop Setup

For the Ross School of Business Environment

Wireless Set Up for the Business School

Step 1: Configure Your Wireless Card for Our Network

If you are using the standard Windows XP scheme, go to Start... Connect To... Show all connections.

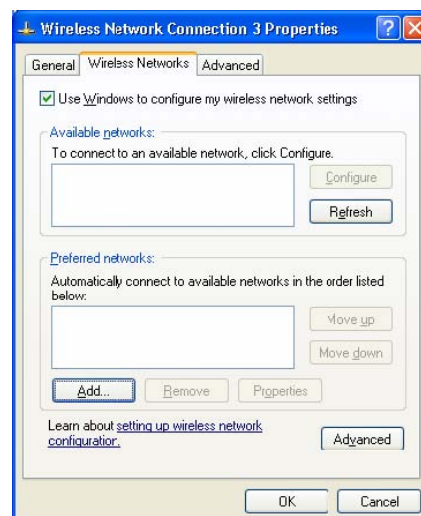
If you are using the Classic Start menu, go to Start... Settings... Network Connections.

- In the section labeled LAN or High-Speed Internet, right-click on the entry for your wireless card and choose Properties. (Mouse over the connections to identify your wireless card if necessary.)
- The dialog box labeled '... Properties' will open.

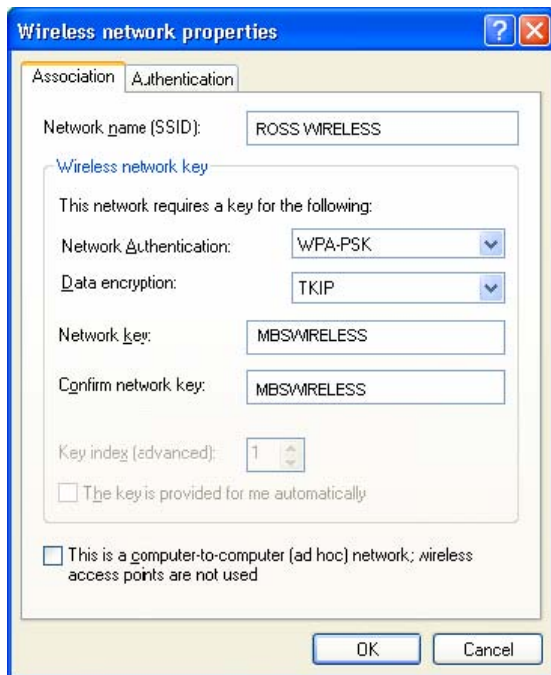
Add the Network Name (SSID)

In the '... Properties' dialog box:

- Select the tab labeled 'Wireless Networks.'
- Make sure that the box labeled 'Use Windows to configure my wireless network settings' is checked.
- Click on the Add button.



The 'Properties' dialog box will open.



- In the entry box labeled 'Network name (SSID),' type 'ROSS WIRELESS' (There is one space between ROSS and WIRELESS).
- In the drop down box labeled 'Network Authentication,' select 'WPA-PSK'
- In the drop down box labeled 'Data Encryption,' select 'TKIP'
- In the entry box labeled 'Network key,' type 'MBSWIRELESS' (as a single word in all capital letters).
- In the entry box labeled 'Confirm Network key,' type 'MBSWIRELESS' (as a single word in all capital letters).

You're Ready to Go!

You will be able to connect to the Internet using the Business School's network once you have configured your wireless card. Every time you wish to access anything that requires Internet Access from the Business School (ex. Outlook, SFTP, the web, etc.) you will have to open up your web browser and authenticate with your unqname and password.