





Washtenaw Ave TOD Site Inventory: 1 of 2

Group 2: Kaitlyn Campbell, Michael Gradis, Joel Heeres, Ethan Miller



Building Use Key	
	Commercial
	Office/Medical
	Green space
	Residential

-  Points of Congestion
-  Bus Stops



An AATA bus stop is located an at inconvenient distance from pedestrian crosswalk, causing pedestrians to cross traffic at 45 mph



Whole Foods Market, Barnes & Noble, and Walgreens are all within walking distance to the north



To the northwest, a vacant strip mall sits at the highest point on the site



Uncle Ed's Oil Shop and Midas abut the site to the east

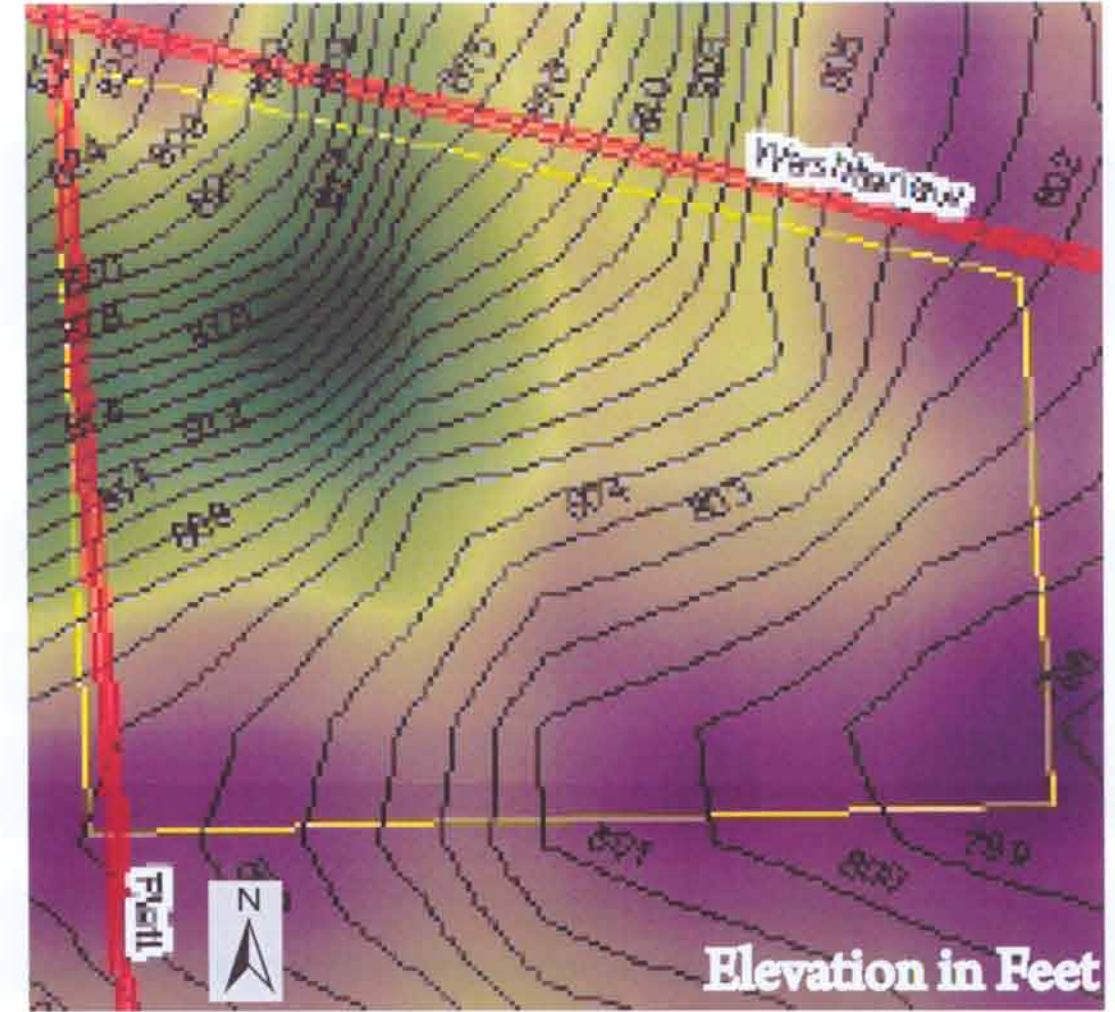
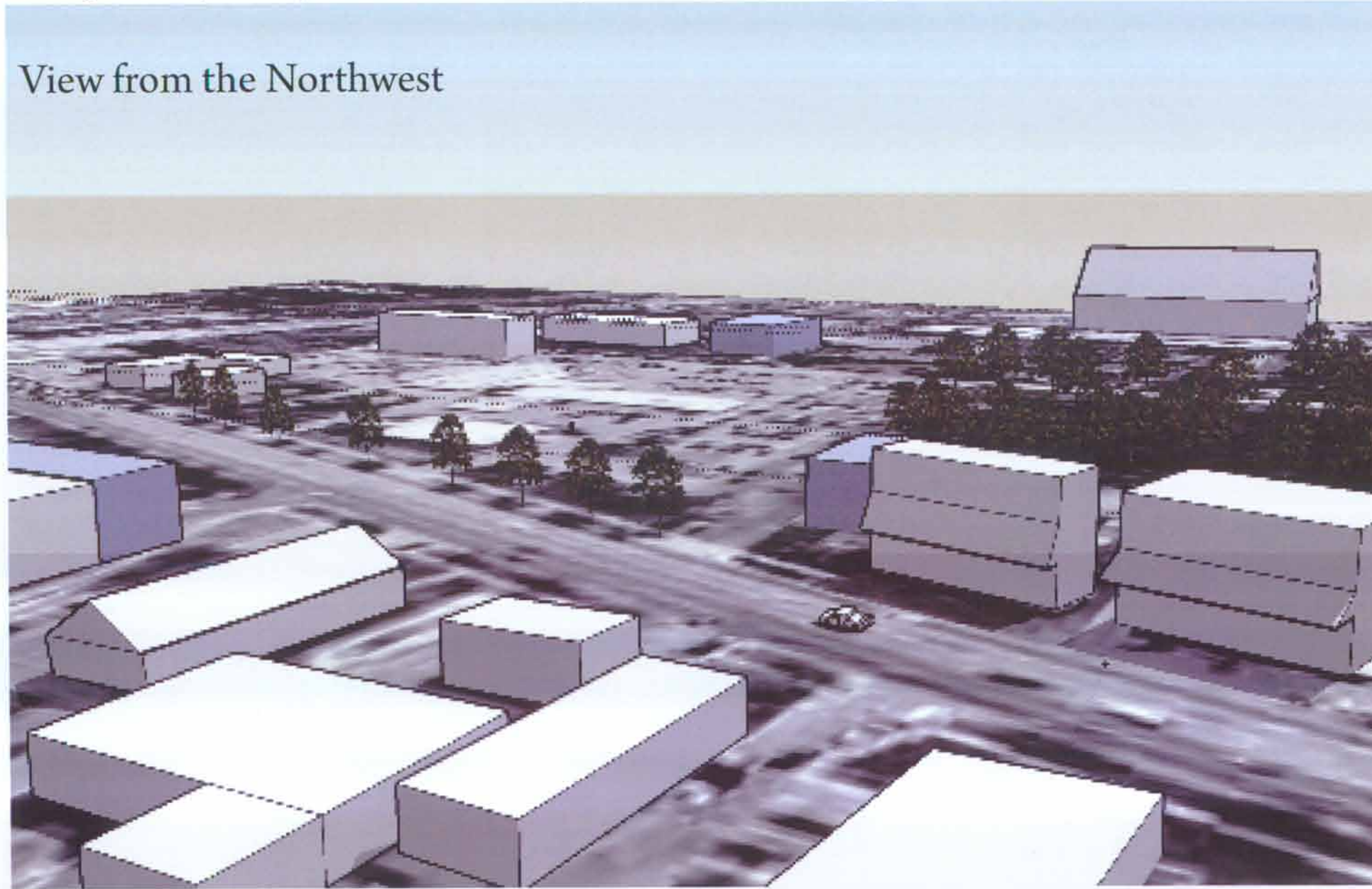


Medical offices dominate to the south including an in-patient rehabilitation center

Washtenaw Ave TOD Site Inventory: 2 of 2

Group 2: Kaitlyn Campbell, Michael Gradis, Joel Heeres, Ethan Miller

View from the Northwest



City of Ann Arbor Weather Data

	Jan.	Feb.	Mar	Apr	May	Jun	Jul	Aug	Sep	Oct	Nov	Dec
High temp (Fahrenheit)	30	34	45	58	70	79	83	81	74	61	47	35
Low temp (Fahrenheit)	17	19	27	37	48	58	62	61	53	42	32	22
Humidity-morning (%)	80	78	78	77	77	80	83	88	89	85	82	81
Humidity-afternoon (%)	70	65	60	54	52	54	54	58	58	59	65	71
Sunshine (%)	40	45	50	53	60	65	67	65	60	50	35	30
Precipitation (in)	2.2	2.0	2.8	3.4	3.0	3.4	3.2	3.7	3.4	2.5	3.0	2.8
Snowfall (in.)	10.8	9	7	2	0	0	0	0	0	0.5	3	10.5
Wind speed (mph)	11.8	11.3	11.5	11.0	10.0	9.0	8.3	7.8	8.5	9.5	11.0	11.0

