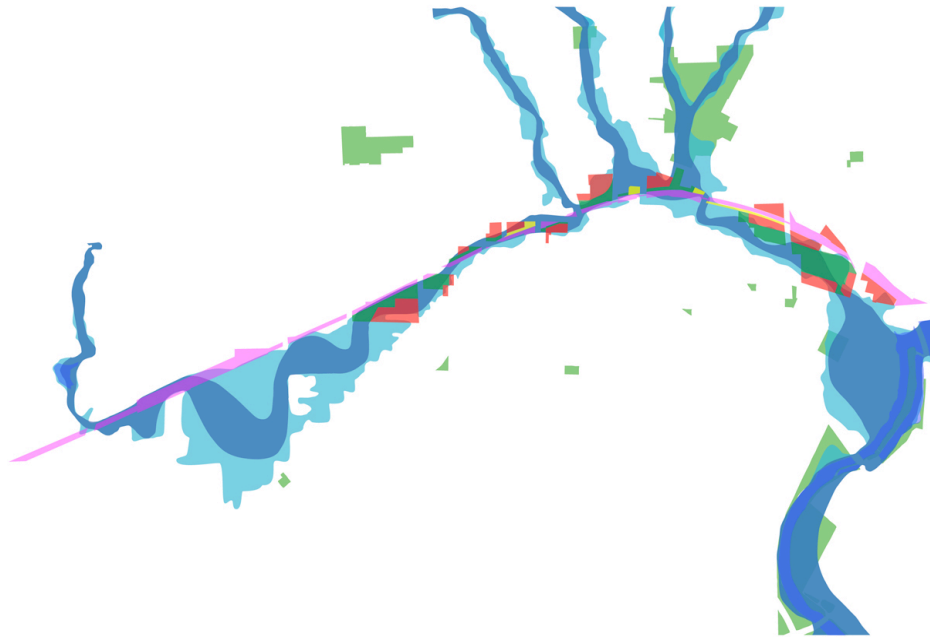


allen creek greenway

supplementary research and preliminary analysis



MAP TEAM 031
RICHARD BOLE
MICHAEL DI CRISTINO
MELANIE GLOVER
FRANZ E. KURATH

Stephen M. Ross School of Business at the University of Michigan
Allen Creek Corridor, MAP 2005, April 26, 2005

Allen Creek Steering Committee

Allen Creek Corridor MAP Team (031):

Richard Bole
Michael di Cristino
Melanie Glover
Franz Kurath

Project Liaison(s)
Joe O'Neal
Margaret Wong
Leigh Greden

Faculty Team
Peter Allen
Anne Harrington
Gretchen Spreitzer



April 28, 2005